

# Reimagining Digital Trust

A Strategic Guide to Digital Security, Automation,  
and Cryptographic Trust



# Contents

Your Guide to the Digital Trust Transformation

**01**

**Introduction**

The Inflection Point

**02**

**The Future**

A New Era

**03**

**Opportunities**

Seizing Advantage

**04**

**Your Partner**

Digital Trust Platform

**05**

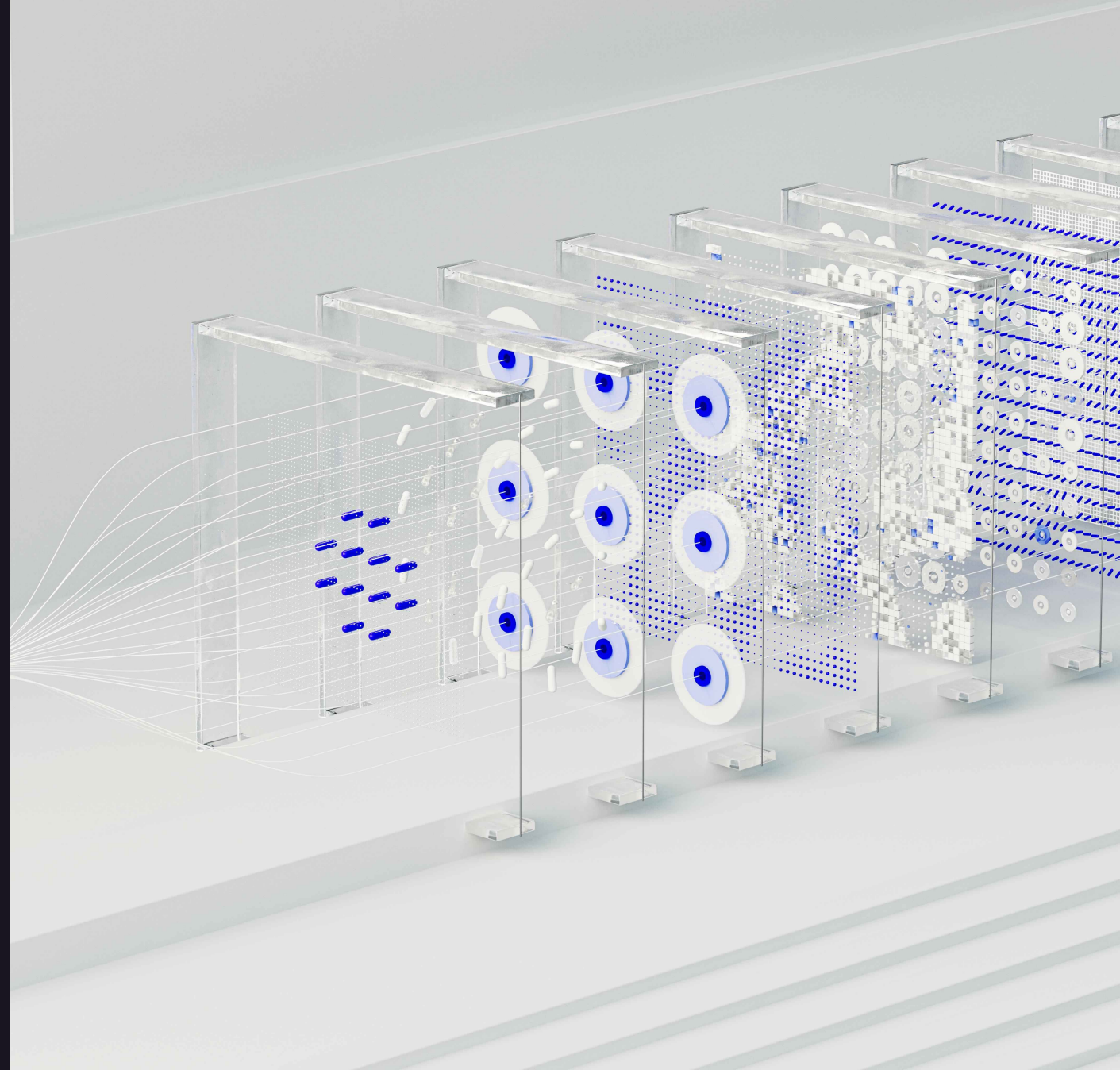
**Leading**

The Path Forward

01

# The Inflection Point

Why Digital Trust Matters Now More Than Ever



# The Rapid Evolution of Digital Trust

When SSL.com started decades ago, certificate lifespans stretched for years, quantum computing was theoretical, and AI was science fiction.

Today, we're at the intersection of massive shifts that will fundamentally reshape how we secure the internet.

## Why This Matters

Every business has digital assets — whether they know it or not. Organizations that fail to adapt risk operational disruption, brand damage, and regulatory exposure. The question isn't whether digital trust matters to your business. It's whether you'll lead this transformation or be disrupted by it.

*Digital trust isn't static. It requires continuous adaptation and a trusted partner to help you navigate the changes ahead.*

# 72%

of U.S. business owners are very concerned about attacks in the next 12 months

Gallagher 2025 Survey

02

# A New Era of Digital Trust

The Evolution Reshaping Digital Security



# Standards Are Being Rebuilt

The technology that underpinned digital security for two decades is being rebuilt from the ground up. And that's a good thing.

Organizations that embrace this evolution gain agility, stronger security, and competitive advantages.

*The businesses that recognize this shift are positioning themselves to lead rather than react.*

From  
**398 → 47**  
Days

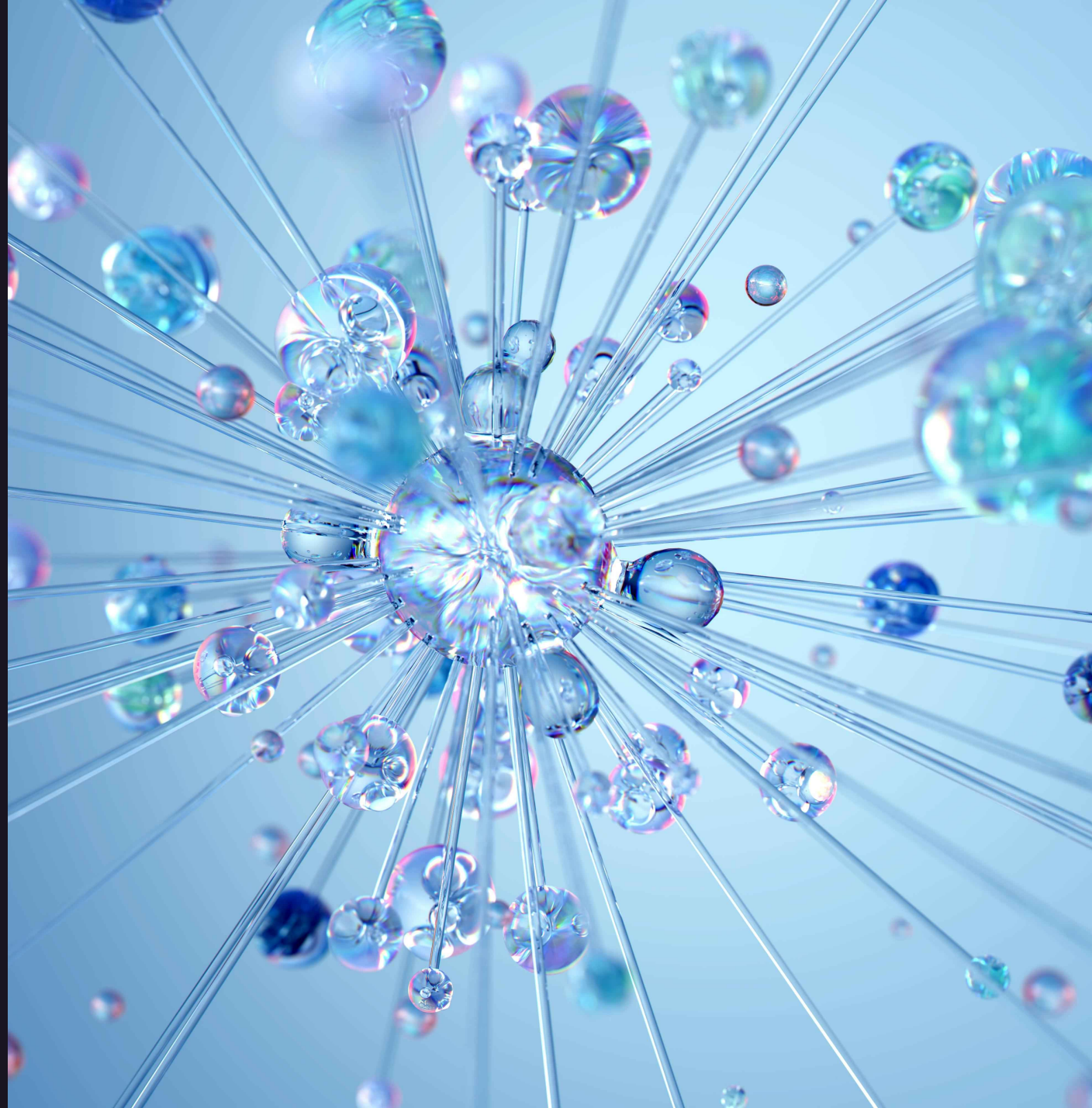
Certificate validity in 2025 versus 2029  
— an 88% reduction driving the  
automation revolution

CA/Browser Forum Ballot SC-081

03

# How Challenges Create Opportunities

Automation, Quantum, and AI



## The Automation Advantage

Think of digital certificates like corporate IDs. The information becomes less accurate over time. Shorter validity periods mean fresher, more trustworthy credentials.

With ACME protocol support, REST APIs, and certificate lifecycle management, organizations that automate now aren't just solving today's problem. They're building infrastructure for every security evolution that follows.

SSL.com integrates with the tools enterprises already use. And for large enterprises with legacy and other mission-critical systems, custom integrations are a critical component of your automation strategy.

The result: your IT team spends less time managing certificates and more time on strategic initiatives.

### The Automation Payoff

- ✓ Reduced operational overhead
- ✓ Improved security posture
- ✓ Greater organizational agility
- ✓ Critical crypto-agility



## Built for Change

Automation creates the foundation for every future security evolution

# The Quantum Opportunity

Quantum computing will eventually break current cryptographic algorithms. But organizations that prepare now gain something valuable.

The preparation process creates organizational muscle that pays dividends for decades. Early movers gain tested migration playbooks, trained teams, and confidence to move quickly when post-quantum standards finalize.

## Building Quantum Readiness

- ✓ Inventory cryptographic assets
- ✓ Develop migration capabilities
- ✓ Test post-quantum algorithms
- ✓ Build crypto-agile infrastructure
- ✓ Partner with a trusted CA



## Business Transformation

A strategic initiative touching every system that handles sensitive information

### OPPORTUNITY 3

## The Cryptographic Advantage

AI has supercharged both attackers and defenders. Personalized phishing at scale, convincing deepfakes, adaptive threats.

The answer isn't better detection. It's cryptographic proof. S/MIME for signed email, verified brand marks through VMC and BIMl, eSigner for tamper-proof document signing, and C2PA content credentials that prove provenance.

SSL.com is one of the first certificate authorities to implement C2PA content credentials, establishing leadership in the fight against AI-generated misinformation and deepfakes.

*Cryptographic identity provides mathematical certainty: proof of who sent a message, who created content, who authorized an action.*

# 83%

of phishing emails now use AI technology

KnowBe4 2025



04

# Your Digital Trust Platform

A Partner, Not Just a Vendor



# Two Decades of Trusted Leadership

SSL.com has spent over two decades navigating cryptographic transitions, industry consolidation, and the continuous evolution of digital trust.



## Web Security

DV, OV, EV Certificates



## Email & Brand Auth

S/MIME, VMC, BIMl



## Code & Doc Signing

eSigner, CodeSignTool



## Content Auth

C2PA Content Credentials



## IoT Certs

Device Certification



## Enterprise PKI

Private PKI, CLM



SSL

Powering Trust  
in Business

## The SSL.com Difference

### True Partnership

We invest in your success

### Fast & Flexible

Service with the speed and quality you expect

### Comprehensive Platform

Unified approach, not point solutions

### Compliance Expertise

Built-in regulatory knowledge



WebTrust  
Certified



CA/BROWSER FORUM

Member  
CA



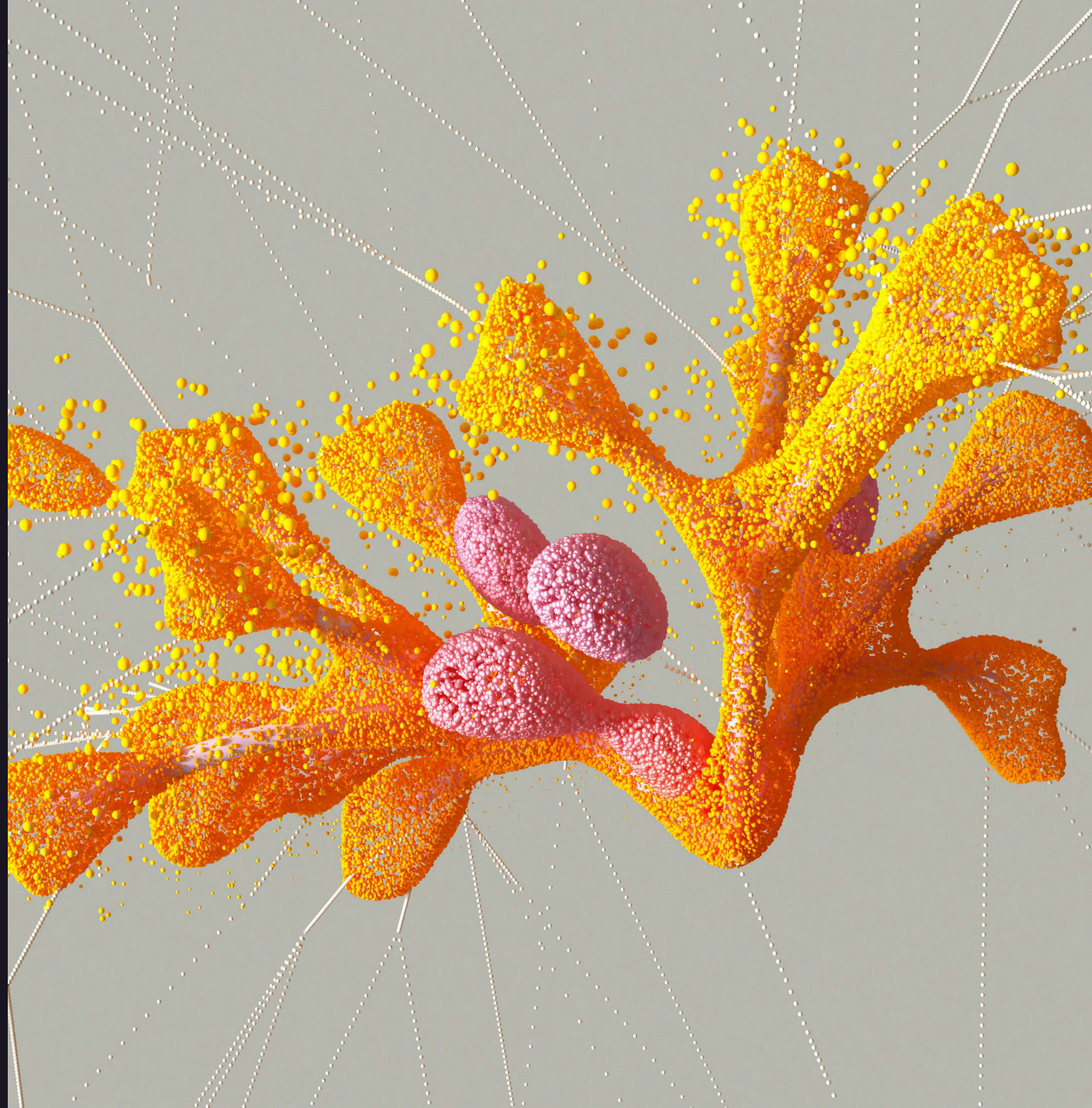
CLOUD  
SIGNATURE  
CONSORTIUM

CSC  
Member

05

# The Path Forward

Position Your Organization to Lead



# Leading the Transformation

The leading companies will be the ones that pioneered the transformation before their competitors. They see the connections: automation enables crypto-agility, which enables quantum readiness. AI defense requires cryptographic trust foundations.

**These aren't separate initiatives. They're one coherent strategy.**

## Questions Every Leader Should Ask

**Do we have full coverage of our digital assets?**

Web Security · Email & Brand Auth · Code Signing · IoT

**Are we prepared for AI-powered attacks?**

S/MIME · VMC & BIMl · C2PA Content Credentials

**Can we handle certificate lifecycle changes?**

ACME · REST APIs · Certificate Lifecycle Management

**Is quantum readiness on our roadmap?**

Post-Quantum Cryptography · Crypto-Agile Infrastructure



# 87%

of customers will pay more for products from brands they trust

Salsify 2025 Consumer Research

# About SSL.com

SSL.com is a Digital Trust Platform built for the enterprise. As one of the first certificate authorities to work with enterprise customers in the U.S. and abroad, we understand how much value protecting your brand, your operations, your voice is worth.

We're continuously innovating — from being among the first CAs to implement C2PA content credentials, to building automation infrastructure that scales with the world's most demanding organizations.

We work with customers the way they want to work — from custom integrations to off-the-shelf solutions, meeting organizations wherever they are on their digital trust journey.

## What We're Building

### Digital Trust Platform

Comprehensive security solutions at enterprise scale

### Enterprise Private PKI

Move faster with greater flexibility

### Quantum-Ready Infrastructure

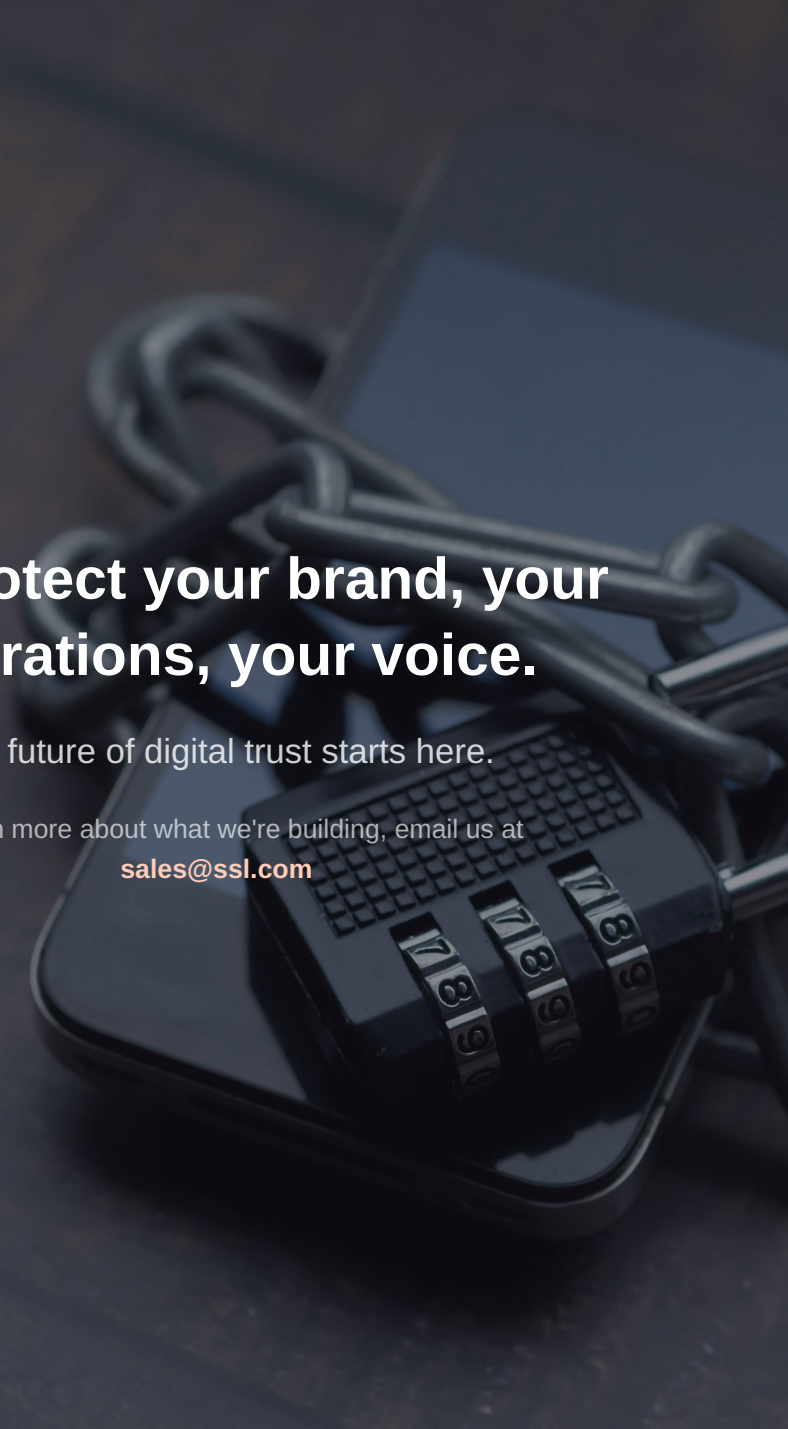
Prepared for the post-quantum era

### C2PA Content Authenticity

First-mover CA in fighting AI-generated misinformation

### Matter IoT Certification

Securing connected devices



# We protect your brand, your operations, your voice.

The future of digital trust starts here.

To learn more about what we're building, email us at [sales@ssl.com](mailto:sales@ssl.com)

# Ready to Reimagine Digital Trust?

Let's explore what a Digital Trust Platform can do  
for your organization.

[Get in Touch](#)

[sales@ssl.com](mailto:sales@ssl.com)